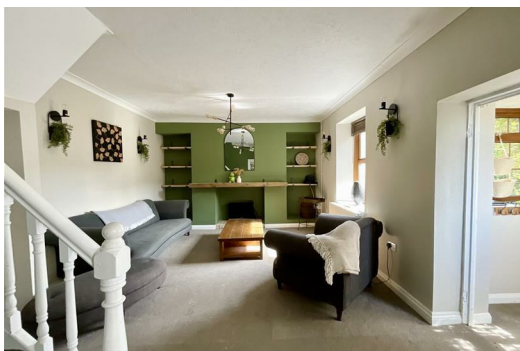




66 Lando Road, Burry Port, Carmarthenshire SA16 0YB
£1,150 PCM

TO LET - A THREE BEDROOM SEMI DETACHED HOUSE located in Pembrey close to Pembrey Country Park and with easy access to the towns of Llanelli, Kidwelly and Carmarthen. The Accommodation within comprises of to the Ground Floor: Lounge, Dining Room, Kitchen with Breakfast Area and Family Bathroom. To the First Floor: Three Bedrooms. Externally the property has Off Road Parking to the front and an enclosed easy maintained garden to the rear. The of £1,150 includes water rates and broadband, Bond/Deposit required £1,150. Council Tax Band - C. No Smokers, No Pets. Available Now



- Ground Floor
- Entrance
- Entrance Porch
- Lounge
- Dining Room
- Kitchen with Breakfast Area
- Family Bathroom
- First Floor
- Bedroom One
- Bedroom Two
- Bedroom Three
- External



Energy Efficiency Rating		
	Current	Potential
Very energy efficient - lower running costs		
(92 plus) A		
(81-91) B		
(69-80) C		
(55-68) D		
(39-54) E		
(21-38) F		
(1-20) G		
Not energy efficient - higher running costs		
England & Wales	EU Directive 2002/91/EC	

Environmental Impact (CO ₂) Rating		
	Current	Potential
Very environmentally friendly - lower CO ₂ emissions		
(92 plus) A		
(81-91) B		
(69-80) C		
(55-68) D		
(39-54) E		
(21-38) F		
(1-20) G		
Not environmentally friendly - higher CO ₂ emissions		
England & Wales	EU Directive 2002/91/EC	